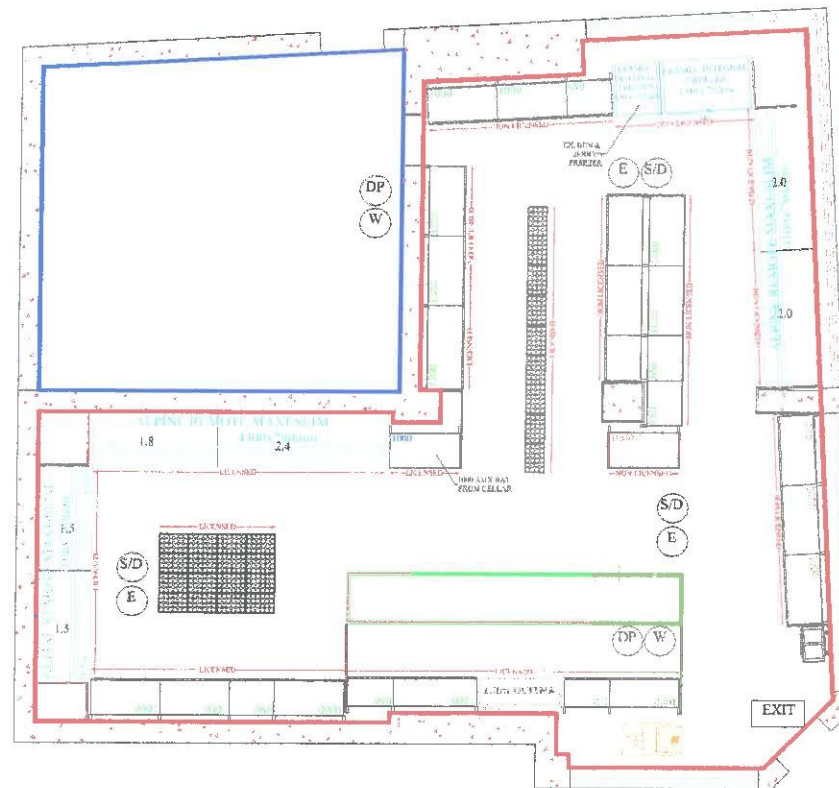


LEGEND		KEY:	
(E)	EMERGENCY LIGHTING POINT	LICENSABLE ACTIVITY (OFF SALES OF ALCOHOL)	
(DP)	FIRE EXTINGUISHER (DRY POWDER)	— STORAGE AREA	
(W)	FIRE EXTINGUISHER (WATER)	POINT OF SALE (ALCOHOL)	
(S/D)	SMOKE DETECTOR		
EXIT	ILLUMINATED EXIT SIGN		



CLIENT:	SATINDER SINGH 59 SALTIRE ROAD SHIPLEY BD18 3JF	REVISIONS:	DATE:
DRAWN BY:	ROGER SHENTON	A:	14.2.12
BRANCH NO:	SCALE: 1:100	B:	
DATE:	17.01.12	C:	
		D:	